



Release 3.5.1, Draft, Jan 2022



Document Summary

Document Item	Current Value
Document Name	Invoice Extension Metered Goods Information Business Message Standard (BMS)
Document Date	Jan 2022
Document Version	3.5.1
Document Issue	1
Document Status	Draft

Work Request Reference

Date of WR Submission to GSMP:	WR Submitter(s):	Refer to Work Request (WR) Number(s):
18-Jan-2016	GS1 Germany	16-000041
03-Oct-2018	GS1 GO	18-000319

Business Requirements Document (BRAD) Reference

Not applicable

Document Change History

Date of Change	Version	Changed By	Reason for Change	Summary of Change
01-Mar-2017	BMS 3.3 – Issue 1	Ewa Iwicka	BMS Release 3.3	New document
15-Oct-2018	BMS 3.4 – Issue 1	Ewa Iwicka	BMS Release 3.4	See summary of changes
04-Feb-2021	BMS 3.5 – Issue 1	Miklos Bolyky	BMS Release 3.5	See summary of changes
05-Jan-2022	BMS 3.5.1 – Issue 1	Miklos Bolyky	BMS Release 3.5.1	See summary of changes

Disclaimer

GS1®, under its IP Policy, seeks to avoid uncertainty regarding intellectual property claims by requiring the participants in the Work Group that developed this **Invoice Extension Metered Goods Information Business Message Standard (BMS)** to agree to grant to GS1 members a royalty-free licence or a RAND licence to Necessary Claims, as that term is defined in the GS1 IP Policy. Furthermore, attention is drawn to the possibility that an implementation of one or more features of this Specification may be the subject of a patent or other intellectual property right that does not involve a Necessary Claim. Any such patent or other intellectual property right is not subject to the licencing obligations of GS1. Moreover, the agreement to grant licences provided under the GS1 IP Policy does not include IP rights and any claims of third parties who were not participants in the Work Group.

Accordingly, GS1 recommends that any organization developing an implementation designed to be in conformance with this Specification should determine whether there are any patents that may encompass a specific implementation that the organisation is developing in compliance with the Specification and whether a licence under a patent or other intellectual property right is needed. Such a determination of a need for licencing should be made in view of the details of the specific system designed by the organisation in consultation with their own patent counsel.



THIS DOCUMENT IS PROVIDED "AS IS" WITH NO WARRANTIES WHATSOEVER, INCLUDING ANY WARRANTY OF MERCHANTABILITY, NONINFRINGEMENT, FITNESS FOR PARTICULAR PURPOSE, OR ANY WARRANTY OTHERWISE ARISING OUT OF THIS SPECIFICATION. GS1 disclaims all liability for any damages arising from use or misuse of this Standard, whether special, indirect, consequential, or compensatory damages, and including liability for infringement of any intellectual property rights, relating to use of information in or reliance upon this document.

GS1 retains the right to make changes to this document at any time, without notice. GS1 makes no warranty for the use of this document and assumes no responsibility for any errors which may appear in the document, nor does it make a commitment to update the information contained herein.

GS1 and the GS1 logo are registered trademarks of GS1 AISBL.

Table of Contents

1	Business Domain View	4
1.1	Introduction	4
2	Business Context	4
3	Business Transaction View	4
4	Business Information View	6
4.1	Metered Goods Information Extension	6
4.2	Data Types	8
4.3	Enumerations (message specific)	9
4.4	Code Lists	9
5	Business Message Examples	9
5.1	Example	9
6	Implementation Considerations	10
6.1	User Guide	10
7	Summary of Changes	11
7.1	BMS Release 3.3	11
7.2	BMS Release 3.4	11
7.3	BMS Release 3.5	11
7.4	BMS Release 3.5.1	11
8	Appendices	11
9	Acknowledgements	11
9.1.1	Work Group	11
9.1.2	Development Team Members	13

1 Business Domain View

1.1 Introduction

Message Definition / Business need

Metered Information Extension is an extension to the Invoice Document used to enable exchange of information necessary for invoicing goods such as services, or utilities that the usage quantity is measured by a dedicated meter (e.g. gas, electricity, etc.).

Principles

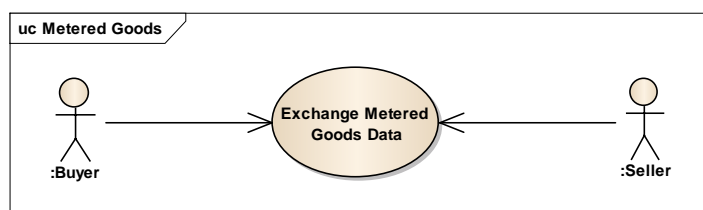
Typically, the Invoice serves as a message claiming payment for goods or services. In the context of metered goods additional information needs to be provided. The data are exchanged via an extension to the Invoice on message or line item level.

2 Business Context

Context Category	Value(s)
Industry	All
Geopolitical	All
Product	All
Process	Pay
System Capabilities	GS1 System
Official Constraints	None

3 Business Transaction View

Use case diagram



Use Case Description

Use Case Name	UC1
Use Case Description	Provide metering unit identification, location and measurement data enabling payment for measured goods
Actors (Goal)	Seller (payee) Buyer (payer)
Performance Goals	None
Preconditions	None
Post conditions	None

Main Scenario	Begins when the seller generates an invoice based on the quantity of measured goods deliveries.		
	Continues with:		
	Step #	Actor	Activity Step
		Seller	Issues and sends the invoice to the buyer.
	Ends when The buyer receives the invoice.		
Alternative Scenario(s)	Not Applicable		
Related Rules	None		

Activity diagram

Not Applicable

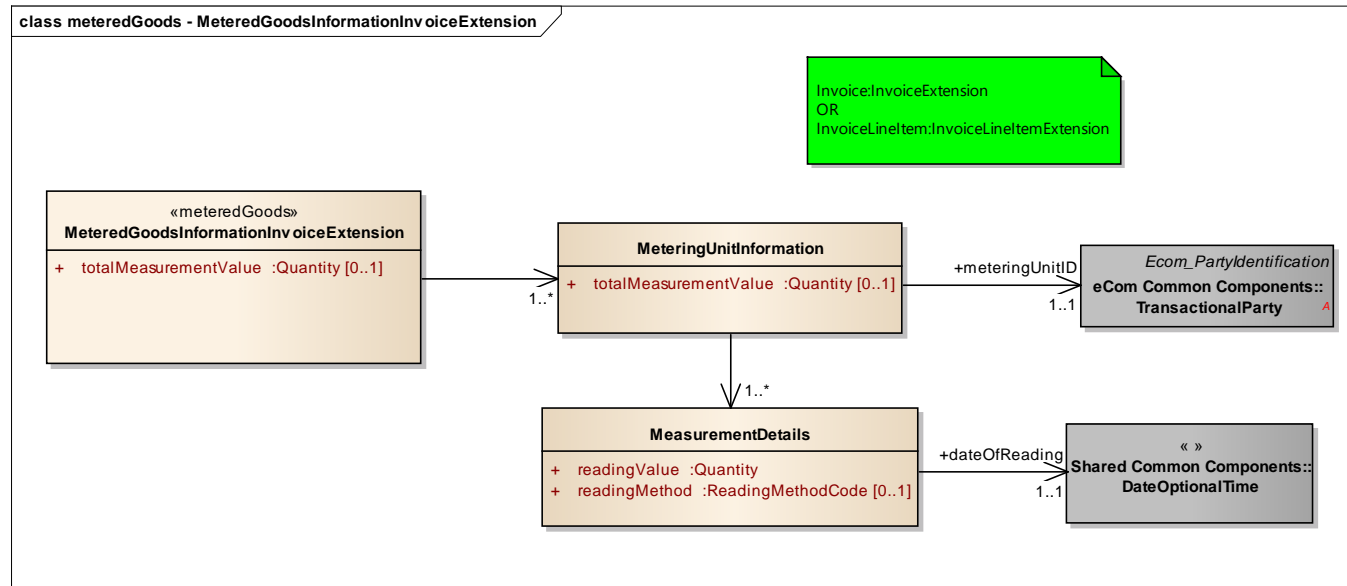
Communication diagram

Not Applicable

4 Business Information View

4.1 Metered Goods Information Extension

Class diagram



GDD report

The content of the **MeteredGoodsInformationInvoiceExtension** class, its structure and component definitions can be accessed in the Global Data Dictionary:
http://apps.gs1.org/GDD/bms/Version3_2/Pages/bieDetails.aspx?semanticURN=urn:gs1:gdd:bie:MeteredGoodsInformationInvoiceExtension



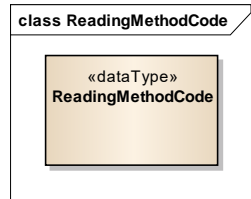
Content	Attribute / Role	Datatype /Secondary class	Multiplicity	Definition	Requirements
MeteredGoodsInformationInvoiceExtension				An extension specifying information related to payment for metered utilities consumption, such as: water, electricity, gas, etc.	
Association		MeteringUnitInformation	1..*	Information about the metering unit identification and reading status.	
Attribute	totalMeasurementValue	Quantity	0..1	Specifies total consumption value for the invoicing period.	
MeasurementDetails				Specifies details related to consumption reading per metering unit.	
Association	dateOfReading	DateOptionalTime	1..1	Date and optionally time when the reading of the consumption quantity took place.	
Attribute	readingValue	Quantity	1..1	Specifies value of the utilities consumption reading.	
Attribute	readingMethod	ReadingMethodCode	0..1	Specifies the method of reading the consumption value from the utility meter.	
MeteringUnitInformation				Information about the metering unit identification and reading status.	
Association		MeasurementDetails	1..*	Specifies details related to consumption reading per metering unit.	
Association	meteringUnitID	TransactionalParty	1..1	Identification and optionally location of the utilities metering unit.	
Attribute	totalMeasurementValue	Quantity	0..1	Specifies total consumption value for the invoicing period.	



Note: Reference Shared Common Library Business Message (BMS) Release 3.3 and eCom Domain Common Library Business Message (BMS) Release 3.3 for all common information.

4.2 Data Types

Class diagram



GDD report

Content	Attribute / Role	Datatype /Secondary class	Multiplicity	Definition	Requirements
ReadingMethodCode				Specifies the method of reading the consumption value from the utility meter. Allowed code values are specified in GS1 Code List ReadingMethodCode.	
Generalization		GS1Code			



Note: Reference Shared Common Library Business Message (BMS) Release 3.3 and eCom Domain Common Library Business Message (BMS) Release 3.3 for all common information.

4.3 Enumerations (message specific)

Not applicable

4.4 Code Lists

Class	Code list	Referenced in
MeatActivityHistory	ReadingMethodCode	http://apps.gs1.org/GDD/Pages/clDetails.aspx?semanticURN=urn:gs1:gdd:cl:ReadingMethodCode



Note: Refer to the Global Data Dictionary (GDD) for the code values.

5 Business Message Examples

5.1 Example

Attribute	Value
Invoice	
invoiceTypeCode	INVOICE
invoiceCurrencyCode	EUR
Document	
creationDateTime	2016-04-12 10:15
documentStatusCode	ORIGINAL
EntityIdentification (+invoiceIdentification)	
entityIdentification	IN11-548
PartyIdentification (+contentOwner)	
gln	4098765000010
TransactionalParty (+buyer)	
gln	5412345000013
TransactionalParty (+seller)	
gln	4098765000010
InvoiceTotals (+invoiceTotals)	
totalInvoiceAmount	999.6 EUR
totalAmountInvoiceAllowancesCharges	0 EUR
totalLineAmountInclusiveAllowancesCharges	999.6 EUR
totalTaxAmount	159.6 EUR
LeviedDutyFeeTax (+ taxSubTotal)	
dutyFeeTaxCategoryCode	STANDARD_RATE
dutyFeeTaxAmount	159.6 EUR
dutyFeeTaxBasisAmount	840 EUR
dutyFeeTaxPercentage	19.00
dutyFeeTaxTypeCode	VAT
InvoicingPeriod (+invoicingPeriod)	

Attribute	Value
beginDate	2015-01-01
endDate	2015-12-31
InvoiceLineItem	
lineItemNumber	1
invoicedQuantity	12000
measurementUnitCode	MTQ
amountInclusiveAllowancesCharges	120000 EUR
itemPriceInclusiveAllowancesCharges	10 EUR
TransactionalTradeItem	
gtin	40987650000223
MeteredGoodsInformationInvoiceExtension	
MeteringUnitInformation	
totalMeasurementValue	12000
measurementUnitCode	MTQ
MeteringUnitID	
gln	4066665000010
MeasurementDetails *1	
readingValue(Quantity)	7000
measurementUnitCode	MTQ
readingMethod	MANUAL
dateOfReading	2015-06-01
MeasurementDetails *2	
readingValue(Quantity)	5000
measurementUnitCode	MTQ
readingMethod	CALCULATED
dateOfReading	2015-12-31

6 Implementation Considerations

6.1 User Guide

The Functional User Guide Order contains more information about the structure and content of the Metered Goods Information Invoice Extension: http://www.gs1.org/docs/ecom/xml/3/3.3/eCom-Trade_messages.html#InvoiceMeterExtension

7 Summary of Changes

Any change in the GS1 standards is done based on the Work Request (WR) submitted by the GS1 User Companies or Member Organisations. All Work Requests are documented in the Work Request system available on the GS1 website: <http://wr.gs1.org>. The system is accessible to registered users. New visitors need to register first, to be able to access it. WRs can be searched by the number referenced in tables below, see: Search Work Requests. The number starts with the two last digits of the year when it was submitted, followed by the consecutive number within that year.



Note: WRs submitted earlier than February 2012 should be searched in Old Change Requests.

7.1 BMS Release 3.3

Change	Associated WR
Initial Document Creation	WR 16-000461

7.2 BMS Release 3.4

No work requests. Indirect changes due to upgrade to new Shared and eCom Common libraries.

7.3 BMS Release 3.5

No work requests. Indirect changes due to upgrade to new Shared and eCom Common libraries.

7.4 BMS Release 3.5.1

No work requests. Indirect changes due to upgrade to new Shared and eCom Common libraries.

8 Appendices

Not Applicable

9 Acknowledgements

The following is a list of individuals (and their companies) who participated in the creation, review and approval of this BMS.

9.1.1 Work Group

Function	Name	Company / organisation
Co-chair	Rossner (Pottier), Natascha	GS1 France
Co-chair	Schmidt, Tom Eric	August Storck KG
Member	Bemrose, Jonathan	R&R Ice Cream
Member	Bodemer, Petra	dm-drogerie markt GmbH + Co. KG
Member	Boikanyo, Rebene	GS1 South Africa / Consumer Goods Council of South Africa
Member	Canada, ON	M3B 3L1
Member	Carlson, Jim	General Mills, Inc.
Member	Chresta, Richard	GS1 Switzerland



Function	Name	Company / organisation
Member	Cook, Don	Wal-Mart Stores, Inc.
Member	Cox, Marc	Philips Electronics N.V.
Member	Darnell, David	Systrends
Member	De Flou, Nele	GS1 Belgium & Luxembourg
Member	Dicks, Arne	GS1 Germany
Member	Duvinger, Karina	GS1 Sweden
Member	Foerderer, Klaus	GS1 Germany
Member	Gathmann, Stefan	GS1 Ireland
Member	Grangard, Anders	GS1 Global Office
Member	Harpell, Eileen	GS1 Community Room Staff
Member	Hand, Phil	JDA Software
Member	Herregodts, Kurt	GS1 Belgium & Luxembourg
Member	Kempkes, Fred	Unilever N.V.
Member	Kernan, Brendan	GS1 Ireland
Member	Kidd, Robin	Nestle
Member	Krid, Anne-Claire	GS1 France
Member	Lanoue, Tom	General Mills, Inc.
Member	Laur, Rita	GS1 Canada
Member	Lenman, Mia	GS1 Sweden
Member	Lerch, Hanjoerg	METRO Group
Member	Moberg, Dale	Axway
Member	Montes de Oca, Alejandra	GS1 Mexico
Member	Ng, Ella	GS1 Australia
Member	Peelen, Esther	GS1 Netherlands
Member	Pele kies, Andreas	GS1 Germany
Member	Perrier, Patricia	GS1 France
Member	Przybilla, Christian	GS1 Germany
Member	Pujol, Xavier	GS1 Spain
Member	Racek, Greg	Wal-Mart Stores, Inc.
Member	Repetto, Mirko	GS1 Italy
Member	Robba, Steven	1WorldSync Holdings, Inc.
Member	Rosell, Pere	GS1 Spain
Member	Rosenberg, Steven	GS1 US
Member	Schmid, Sue	GS1 Australia
Member	Schneider, Christian	GS1 Switzerland
Member	Sehorz, Eugen	GS1 Austria
Member	Sharma, Vishal	General Mills, Inc.
Member	Shimazaki, Ayako	GS1 Japan
Member	Sion, Emilie	GS1 France
Member	Souza, Nadia	GS1 Brasil



Function	Name	Company / organisation
Member	Strand, Roman	GS1 Germany
Member	Tan, Milton	GS1 Malaysia
Member	Tompsett, Simon	Waitrose
Member	Trelle, Ute	1WorldSync Holdings, Inc.
Member	Tse, Steve	GS1 Hong Kong
Member	Tyson, Betty	Knouse Foods Cooperative, Inc
Member	Van den Bergh, Senne	GS1 Belgium & Luxembourg
Member	Van der Eijk, Pim	OASIS - Sonnenglanz Consulting BV
Member	Veldhuis, Saskia	Procter & Gamble Co.
Member	Welch, Shan	GS1 UK
Member	Westerkamp, Jan	GS1 Netherlands
Member	Wilson, Mary	GS1 US
Member	Windsperger, Bekki	Best Buy Co., Inc.
Member	Yang, Shaopeng	GS1 China
Member	Yusdiar, Dani	GS1 Indonesia
Member	Zwanziger, Greg	SUPERVALU

9.1.2 Development Team Members

Function	Name	Organisation
GSMP Process Lead	David Buckley	GS1 Global Office
Technical Development Lead	Miklos Bolyky	GS1 Global Office
Peer Review	Mark Van Eeghem	GS1 Global Office